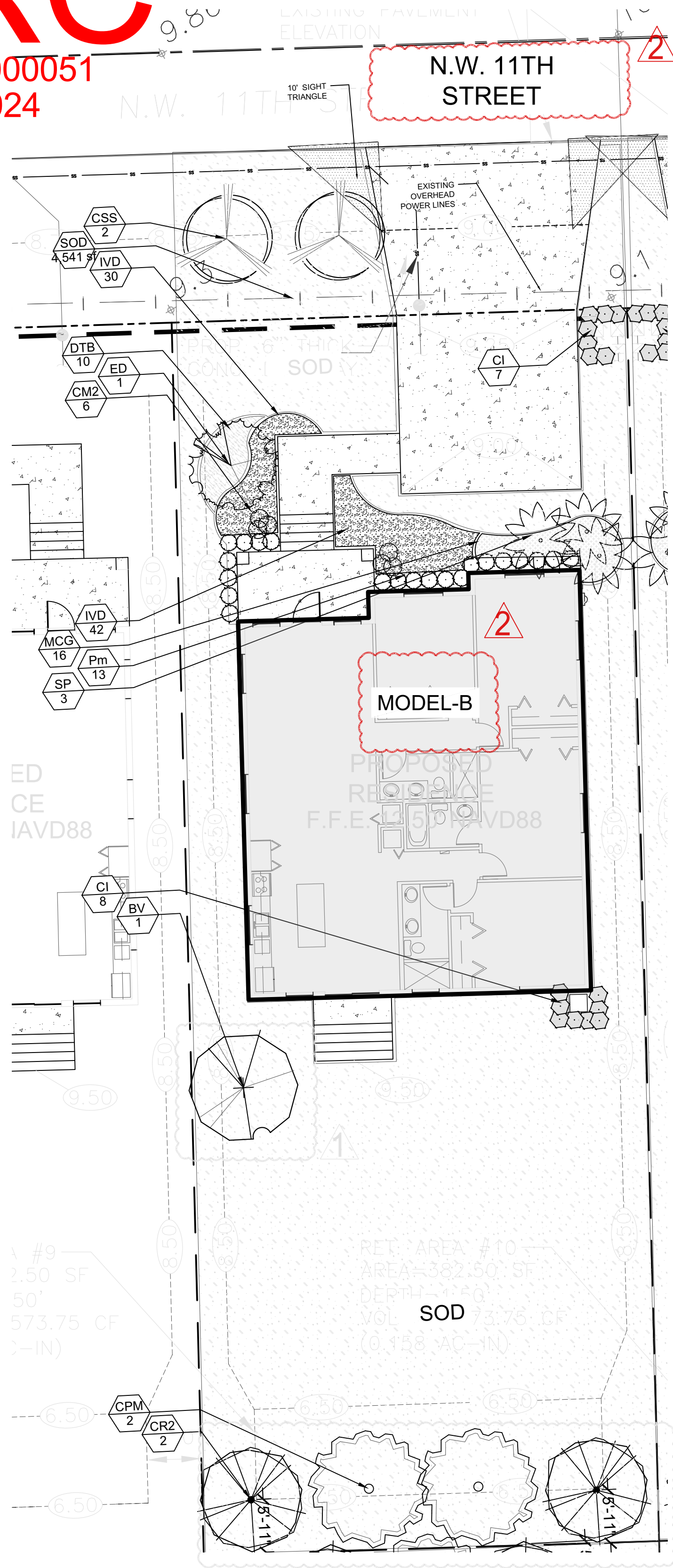


DRC

PZ23-12000051  
05/15/2024



PLANT SCHEDULE HOUSE MODEL B

CODE	QTY	BOTANICAL / COMMON NAME	CONTAINER	DBH	SIZE	NATIVE	DROUGHT TOLERANCE		DETAIL	REMARKS
TREES										
BV	1	Bulnesia arborea / Verawood	Field Grown / B & B	2.5" Cal	10' HT. x 5' SPR.	No	High			
CR2	2	Clusia rosea 'Pitch Apple' / Balsam Apple	FG/B&B	2" Cal	12' HT. X 5' SPR.	Yes	High			
ED	1	Elaeocarpus decipiens / Japanese Blueberry Tree	FG/B&B	3" Cal	12' HT. x 5' Spr., S	No	High			
MITIGATION TREES										
CPM	2	Coccoloba diversifolia / Pigeon Plum	FG/B&B	2" Cal	12' HT. x 5' Spr., S	Yes	High			
PALM TREES										
SP	3	Sabal palmetto / Cabbage Palmetto	FG/B&B		14'-20' OA, Vary Heights	Yes	High			
STREET TREES										
CSS	2	Conocarpus erectus sericeus / Silver Buttonwood	FG/B&B	2" Cal.	12' HT. X 5' SPR.	Yes	High			
CODE	QTY	BOTANICAL / COMMON NAME	SIZE	CONTAINER	SIZE	NATIVE	DROUGHT TOLERANCE		DETAIL	REMARKS
SHRUBS										
CI	15	Chrysobalanus icaco / Coco Plum	-		30" HT. X 24" SPD	Yes	HIGH			
CM2	6	Codiaeum variegatum 'Mammy' / Mammy Croton	-		18"x18"	No	High			
Pm	21	Podocarpus macrophyllus / Yew Pine	-		30" HT. X 24" SPD	No	High			
CODE	QTY	BOTANICAL / COMMON NAME	SIZE	CONTAINER	SIZE	NAITVE	DROUGHT TOLERANCE	SPACING	DETAIL	REMARKS
SHRUB AREAS										
IVD	72	Ilex vomitoria 'Stokes dwarf' / Dwarf Yaupon Holly	-		14" HT x 16" SPR	Yes	High	18" o.c.		
CODE	QTY	BOTANICAL / COMMON NAME	SIZE	CONTAINER	SIZE	NATIVE	DROUGHT TOLERANCE	SPACING	DETAIL	REMARKS
GROUND COVERS										
DTB	10	Dianella tasmanica / Blueberry Flax Lily	-		16" HT x 16" SPR @	No	Medium	24" o.c.		
SOD/SEED										
SOD	4,585 sf	Stenotaphrum secundatum 'Floritam' / 'Floritam' St. Augustine Sod	sod							
TALL GROUND COVERS										
MCG	16	Muhlenbergia capillaris / Pink Muhly Grass	-	Yes	24" HT. x 24" SPR.	Yes	Medium	24" o.c.		

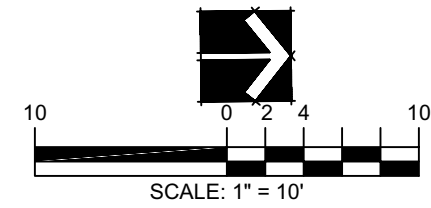
MODEL HOUSE B LANDSCAPE CALCULATIONS

ZONING: (RS-4)

SINGLE FAMILY RESIDENCE

ARTICLE 5

GROSS SITE AREA	6,884 S.F.	
OPEN SPACE / PERVIOUS AREA	4,657 S.F.	67.64%
TOTAL IMPERVIOUS AREA	2,227 S.F.	32.36%
	REQUIRED	PROVIDED
(C) MINIMUM DEVELOPMENT SITE LANDSCAPING		
TABLE 155.5203.C		
(5) TREES AND 30 SHRUBS	5 TREES	7 TREES
30 SHRUBS	30 SHRUBS	30+ SHRUBS
G. STREET TREES		
(1) TREE PER EVERY 40 FEET OF STREET FRONTAGE ( EXIST. OWH 25' O.C.)		
NW 11TH STREET 50 L.F./25 FT.=2 TREES	2 TREES	2 TREES
TOTAL TREES		
50% OF TOTAL TREES SHALL BE NATIVE SPECIES	5 TREES	8 TREES
NO MORE THAN 50% PERCENT REQ. TREES TO BE PALMS	3 (3:1=15 PALMS)	2 (3:1=3 PALMS)
50% OF REQ. PALMS TO BE 18' H.	1.5	3



FOLIAGE  
EXPRESSIONS  
8801 SW 192nd Terrace,  
Cutler Bay, FL 33157



Digitally signed by  
James B. Euell  
Date: 2024.03.22  
08:51:51 -04'00'

PROPOSED 12 HOUSES

NW 10TH STREET  
POMPANO BEACH, FL 33060

DISTRIBUTION:	DATE:
1 PERMIT COMMENTS	03-22-24
2 PERMIT COMMENTS	03-22-24

DRAWING NAME:  
HOUSE MODELS B  
AT N.W. 11TH. STREET  
LANDSCAPE PLAN AND  
SCHEDULE

DRAWING NUMBER:

L-212.1